

StyleLite[®] TruGloss and TruMatte

High Performance Acrylic

egrdecor.com.au



Made in Australia

EGR
DECOR

StyleLite[®] With TruColor's Advanced Multilayer UV Barrier Technology



Above: Kitchen featuring StyleLite Carbon TruMatte cabinetry and Zenolite Glacier splashback.

StyleLite® is the perfect material to create luxury kitchen and bathroom cabinets, bespoke furniture, and feature panels.

It's an ideal solution for cabinetmakers, builders, architects and discerning homeowners looking to add the perfect finish to their creations.

Superior Features

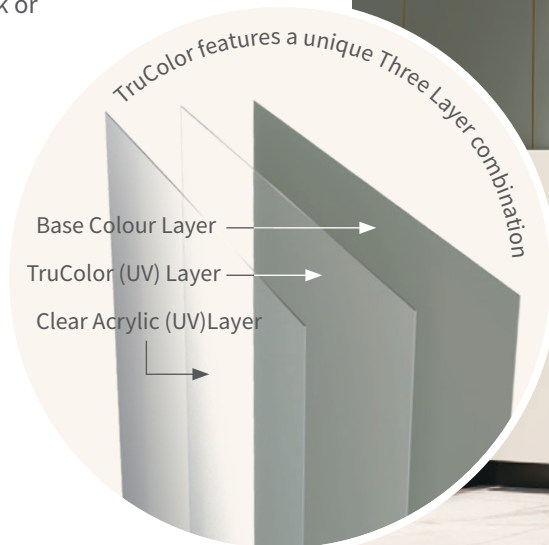
- Available in TruGloss and TruMatte finishes
- Very easy to clean and maintain
- UV and colour change protected
- Durable surface that won't chip, crack or delaminate
- Fingerprint resistant (TruMatte)
- Repairable surface (TruGloss)
- Up to 10 Year residential indoor warranty

Applications

- Kitchen and vanity cabinets
- Office furniture and partitions
- Caravans and RV joinery
- Retail displays

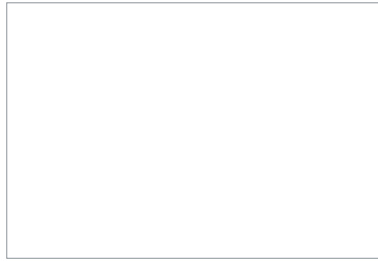
TruColor is the latest and most advanced StyleLite sheet technology.

TruColor features a unique combination of clear and coloured layers that are fused together during manufacture using a sophisticated multilayer die and triple extrusion process.

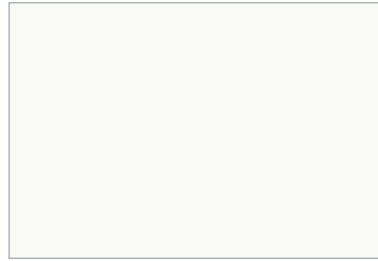


Above: Kitchen featuring StyleLite Rainforest and Arctic TruMatte cabinetry.

TruGloss - Solid Colour Range



Arctic



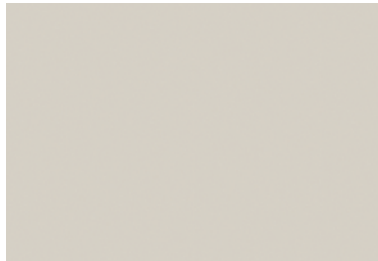
Alabaster



Ash



Dove



Sand



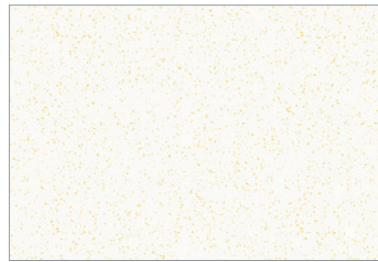
Mocha



Charcoal



Slate



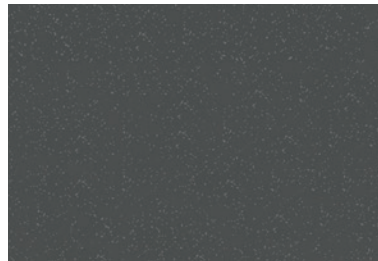
Arctic Pearl (Metallic)



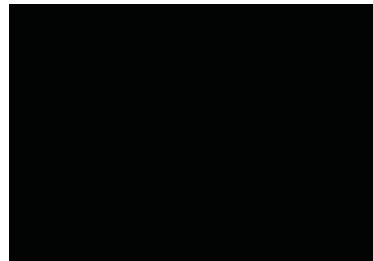
Champagne (Metallic)



Silver (Metallic)



Graphite (Metallic)

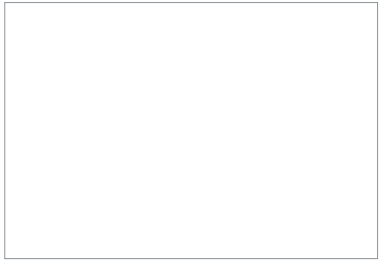


Carbon

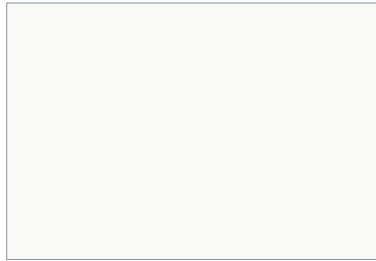


Above: Kitchen featuring StyleLite Arctic TruGloss cabinetry.

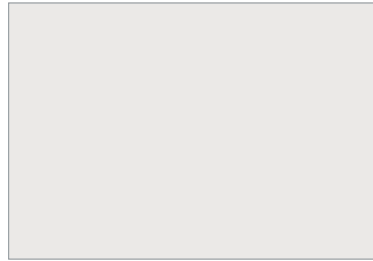
TruMatte - Solid Colour Range



Arctic



Alabaster



Shell



Ash



Mountain



Dove



Rainforest



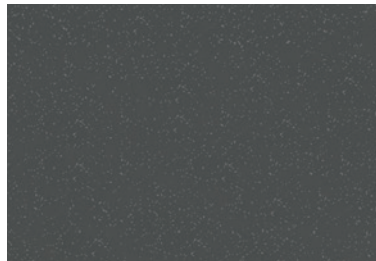
Oceanic



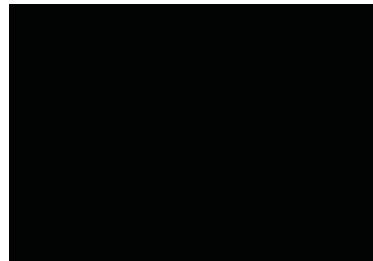
Slate



Charcoal



Graphite (Metallic)

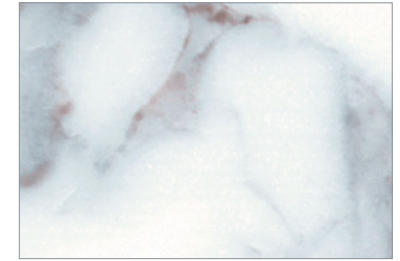


Carbon

Elements - Matte Range



Wired Mercury



Calacatta



Wired Zinc

Due to the nature of the printing process, the colours and images depicted throughout this brochure may vary compared to the actual finished products' colour. Images and colours are to be used as a guide only.



Above: kitchen featuring StyleLite Carbon TruMatte cabinetry.

Design Guidelines

This product is designed for use in vertical surface applications only. StyleLite is not designed for structural applications. Heat assisted forming/bending of the sheet must be performed in accordance with the StyleLite Install and Specifications Guide.

Guaranteed Quality

StyleLite Panels are created by laminating StyleLite Acrylic Sheet front and back to a variety of substrates using our premier polyurethane (PUR) hot melt bonding system. This system produces a ripple-free finish that is highly resistant to heat, moisture and environmental change over time.

EGR Decor production facilities are recognised for achieving ISO9001 Quality Management certification for their consistent performance and quality systems.

The Environment

No Volatile Organic Compounds (VOCs) are produced in the manufacturing process. StyleLite panels are an inert material, and don't release any emissions to the environment during manufacture or use.

None of the colour pigments used in StyleLite contain heavy metals, such as lead or cadmium. StyleLite is also highly recyclable – making it the best choice for modern, eco-friendly interiors.

Edge Finishing

All StyleLite compatible Edge Band is of premium quality and offer high resistance to heat, abrasion, impact and colour fade.

StyleLite Edge Band is available in two options – Pre-primed and Fusion.

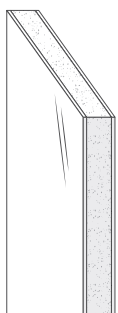
For full details, refer to the **Installation and Specifications Guide**, available on www.stylelite.net, or talk to your local distributor.

Care & Maintenance

StyleLite products can be cleaned simply using wet microfibre cloth or chamois with non-abrasive soap.

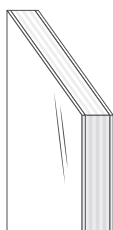
TruGloss's ultra high gloss finish provides a mirror like appearance which can be refinished using a good quality liquid polish. (Pencil Hardness 4H)

TruMatte's smooth, untextured finish provides increase scratch resistance over the gloss surfaces and is highly fingerprint resistant. (Pencil Hardness 6-7H)



StyleLite MDF Panels

Regular StyleLite panels, suitable for a range of general purpose applications. Uses premium quality moisture-resistant MDF, rated to formaldehyde emissions standard E0 or TSCA TITLE VI. Perfect for kitchen and vanity doors and panels, furniture, hinged wardrobe doors, and general cabinetry. Double sided and single sided (with colour matched backer) options available in both TruGloss and TruMatte.



StyleLite Lightweight Plywood Panels

Lightweight panels, perfect for when weight is a consideration. Uses high quality lightweight plywood. Great for interior fit out for caravans and RVs – from furniture and kitchen cabinetry, to vanity doors and panels. Available in both TruGloss and TruMatte.



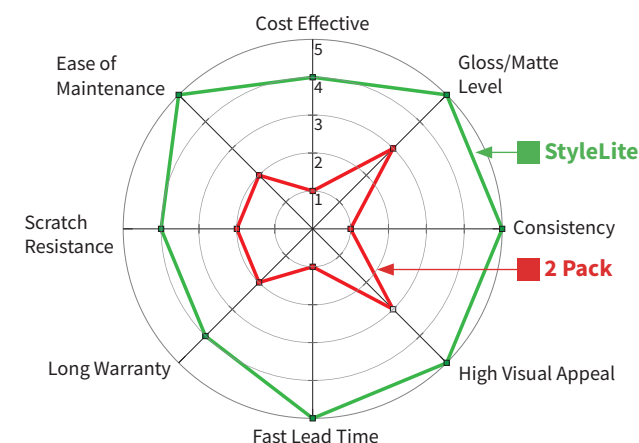
StyleLite Sheet

StyleLite Sheet is manufactured from high quality acrylic-capped ABS, and features reverse-side treatment for superior bonding performance. StyleLite Sheet is provided ready for manual or machine lamination onto a variety of substrates.

Product	Substrate	Sheet Size (nom)	Region	Weight	Finish
StyleLite MDF Panels*	MR MDF E0	2440 × 1220 × 18mm	Global	13.5kg/m ²	TruGloss and TruMatte
	MR MDF E0	3060 × 1230 × 18mm	Global	13.5kg/m ²	TruGloss and TruMatte
Lightweight Plywood Panels†	Lightweight Plywood	2440 × 1220 × 14mm	Global	7kg/m ²	TruGloss and TruMatte
	Lightweight Plywood	2440 × 1220 × 17mm	Global	8kg/m ²	TruGloss and TruMatte
StyleLite Sheet	StyleLite Sheet		Global	1.08kg/m ²	TruGloss
	StyleLite Sheet		Global	0.86kg/m ²	TruMatte

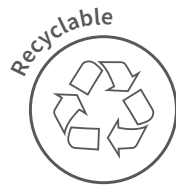
* Other Substrates available on request. Optional White Textured Backing Sheet also available on all products except MR MDF E0 3000 x 1200 x 18mm. † Optional White Textured Backing Sheet also available.

StyleLite v 2 Pack Comparison





Kitchen featuring StyleLite Arctic TruMatte cabinetry and Zenolite Glacier splashback.



EGR Decor

Redefining Decorative Solutions

Drawing on a rich and diverse 48-year heritage in the design, manufacture, and marketing of leading-edge products for Australian and international markets, EGR Decor offers designers, fabricators and homeowners a stunning collection of wall and cabinet materials.

EGR
DECOR



MADE IN AUSTRALIA



PROUDLY DISTRIBUTED BY:



EGR Decor



📍 45 Machinery St, Darra, Brisbane
Queensland 4076, Australia

🌐 www.egrdecor.com.au

✉ info@egrdecor.com.au

📞 1800 347 347



1. EGR expressly disclaims any representations or warranties of any kind, whether express or implied, as to the accuracy, currency, completeness and/or the merchantability or fitness for a particular purpose of any information contained in or provided via this documentation and/or any service or product described or promoted in this document. 2. It is the customer's responsibility to thoroughly examine the product using a qualified person, to determine whether it is suitable for the application it was purchased for. 3. The receiver of our products is fully responsible to check and to take into account possible third party's patent rights, as well as the existing laws in the country of installation prior to installing our product. 4. No liability may be derived from these images or statements nor from our free technical advice. 5. EGR reserves the right to change, add or remove colours or product without notice. 6. EGR Decor and EGR are registered trademarks. 7. Images and colours should be used as a guide only. 8. 10 Year Indoor Warranty: The EGR Decor warranties cover faulty materials for the periods specified on the relevant product warranty documents. The EGR Decor warranties commence from the date of sale by EGR, they are not transferable and are subject to the terms, conditions and exclusions contained within those warranties.

© Copyright 2021 / Patent Pending Oakmoore Pty Ltd trading as EGR. 220-230518H V7 150921