



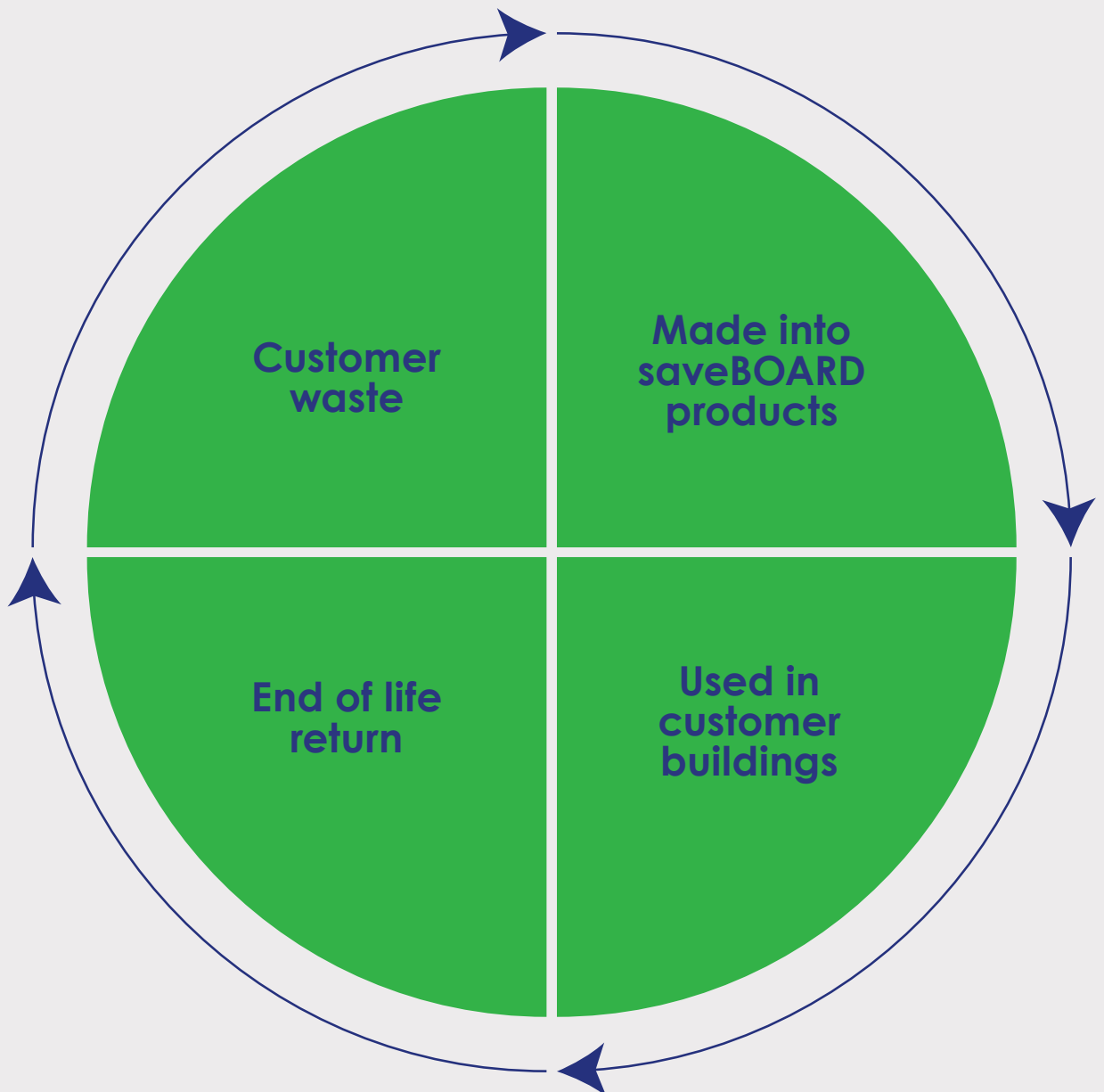
Distributed by



Product Guide

Proudly made in Australia and New Zealand

We are a Commercially viable Circular Economy player.





About us

SaveBoard is a Low Carbon Building Material made from Upcycled packaging.

Made in Australia and New Zealand; healthy, affordable, high performance, low carbon building materials that make a circular economy an everyday reality.

We take everyday packaging waste and upcycle it into high performing building materials - durable, inherently moisture and mould resistant.

Our board products are also 100% recyclable (by saveBOARD) as all recovered offcuts and end of life products can be remanufactured into new boards providing a circular solution.

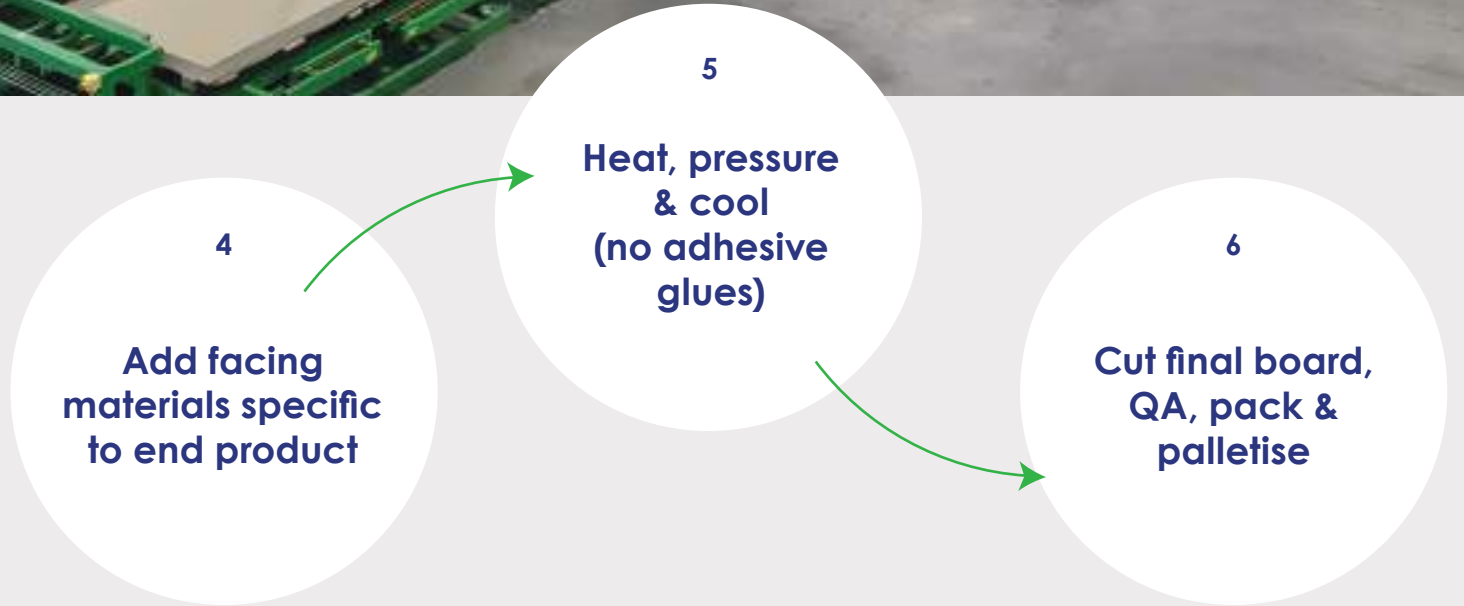
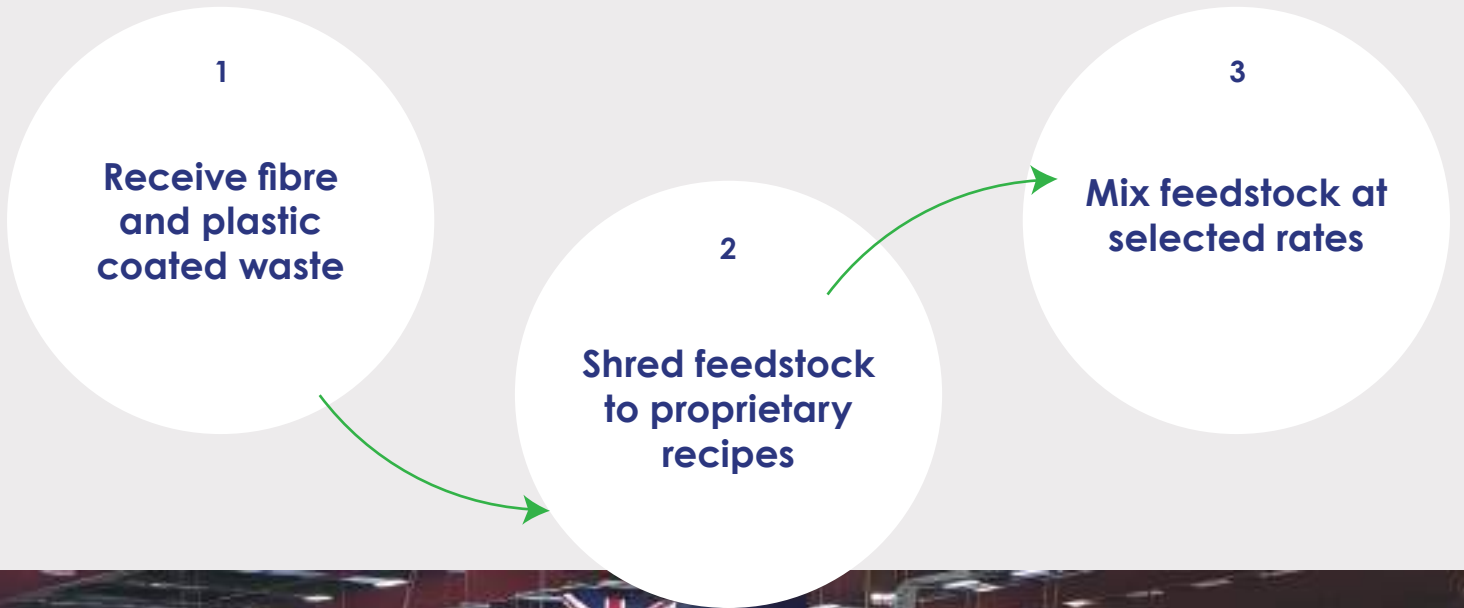
If you are seeking perfection, then saveBOARD is not for you, but each board diverts about 25kg of waste from landfill, so don't feel bad for wanting perfection...

The board products have > 12 years in-service history in the US & 2 years in NZ and now 6 months in Australia. Our patented technology uses only heat, pressure and time to make our Building Products.

No additives; ZERO Glues, ZERO Chemicals, ZERO Adhesives - The plastic in the packaging is our glue.

Whats not to like?







**What we bring in,
we use. What we
cut, we use.**



Our Product Range and suggested usage

Exterior

Application

betterBRACE

Rigid air barrier

roofBOARD

Roofing substrate



Interior

Application

saveBOARD Paperfaced

Impact resistant internal ceiling and wall lining

saveBOARD Exposed

Pre-finished Impact resistant internal ceiling and wall lining

saveBOARD Ceiling Tiles

Ceiling Tiles

saveBOARD Multi-use

Hoardings, industrial, warehousing, floor protection, formwork

saveBOARD betterJOINERY

Furniture, joinery, kitset



Specifications

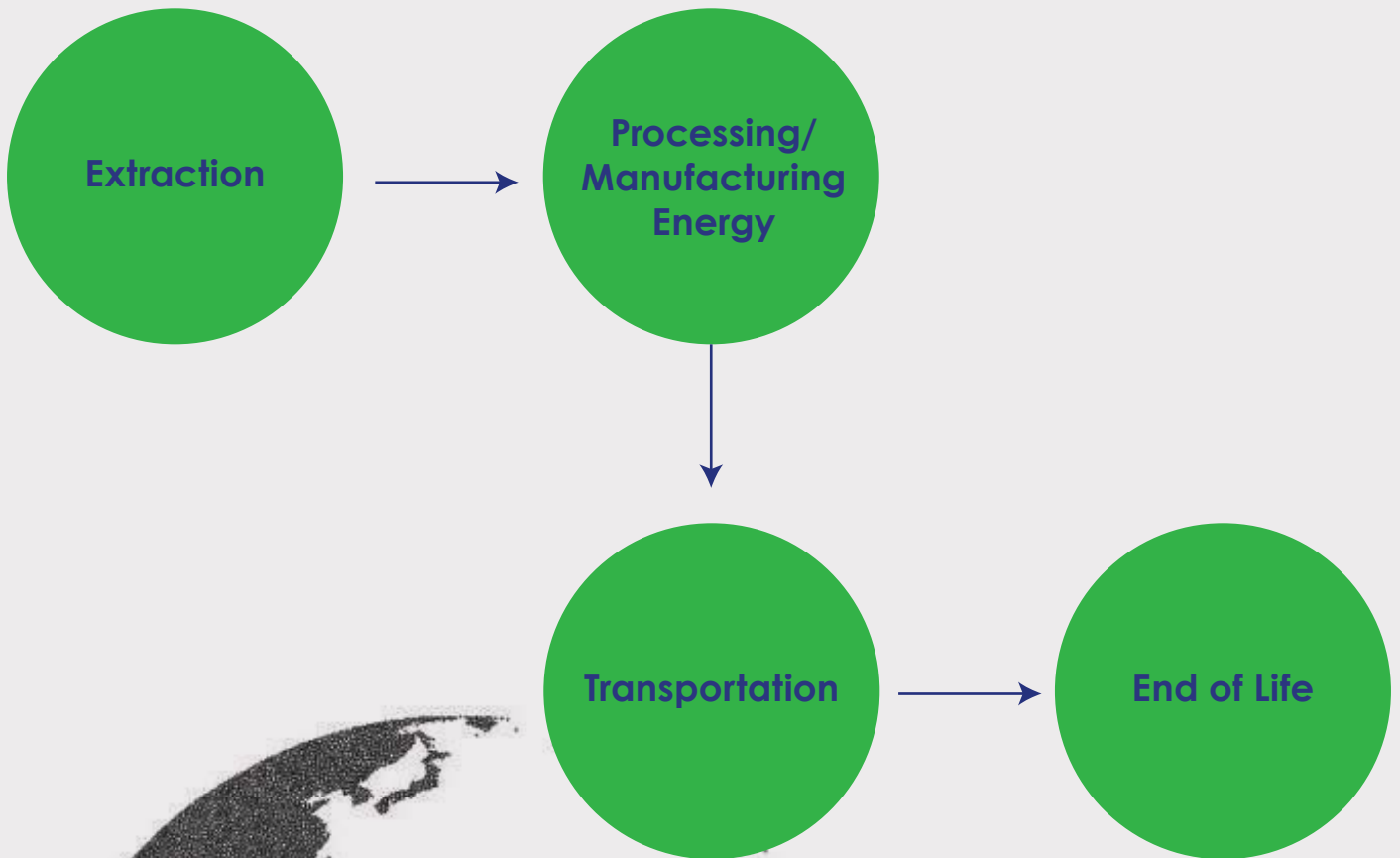
	saveBOARD Multi-use	saveBOARD Exposed	saveBOARD Paperfaced
Application	Industrial, Commercial, Hoardings	Internal walls, ceilings	Internal walls
Sheet Sizes	12mm x 1200 x 2400/2700/3000	10mm x 1200 x 2400/2700/3000	10mm x 1200 x 2400/2700/3000 TE/SE
Durability	Up to 2 Years	Years	Years
Weight	From 32kg	From 25kg (Ceiling Tiles 22kg)	From 25kg
Resistance	Moisture/Mould/ Impact	Moisture/Mould/ Impact	Moisture/Mould/ Impact
Fire Rating	Group 3	Group 3	Group 3

All saveBOARD products deliver:

- ✓ Superior Performance
- ✓ Unparalleled Eco-friendliness
- ✓ Competitively Priced



Earth Friendly



Texture draws attention and starts the conversation.

Part of the beauty of the products is that they're not perfect.
Air bubbles, wrinkles and texture.
Inspire the story.



saveBOARD Certifications



Certified



Certified



Certified



Commencing



Pending

The Green Building council has determined that saveBOARD products are in line with the Sustainable Products credit under the tool Green Star - Design & As Built NZv1.0.

While the credit encourages sustainability and transparency in the product specification of new builds saveBOARD meets the sustainability initiative of 21B recycled content with a 0.99 Sustainability factor (SF).

0.11kg CO₂/kg material

50% less than plywood

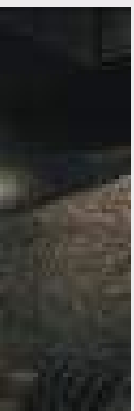
75% less than plasterboard

90% less than cement board

And a growing range of Certifications

saveBOARD in use

Case studies



Te Whare Awhiora Mental Health Hospital



Specifications/Applications

- Paperfaced every internal walls
- High impact – 2 layer ply/plasterboard switched – time and cost saving
- Contributing significant credits - Living Building Challenge
- 65,000 kgs waste diverted from landfill

KFC

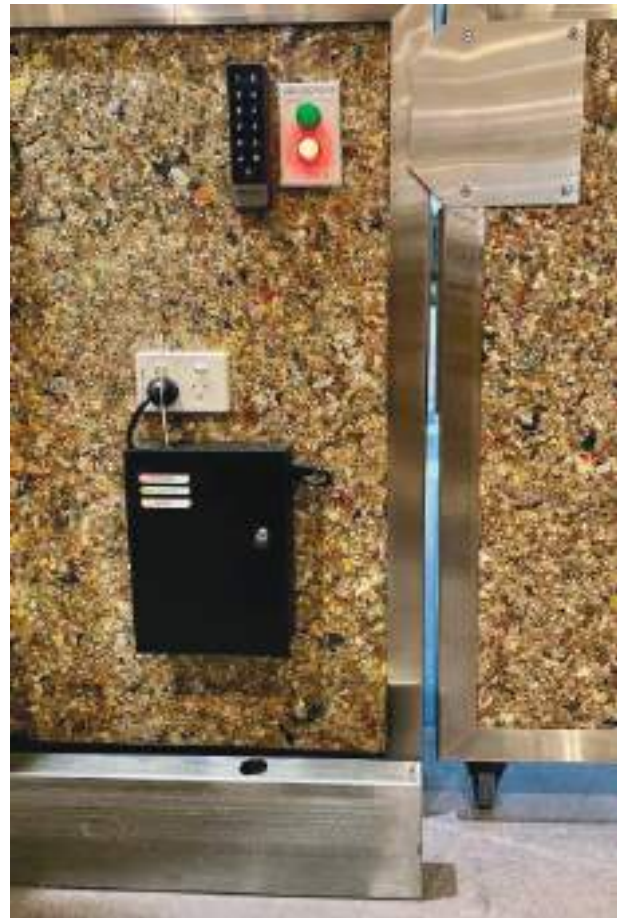
- South Penrith
- Rolling nationally AU & NZ and now in 25 Stores



Woolworths

Currently in 7 Stores in different colours.





Offices & interior

- Feature walls in offices can be painted with Primer 24
- Bending, painting, ceiling, exposed, paperface, staging, carcass, bins.





Sporting

- Sydney Motor Sports Park
- Just like the soccer ball, saveBOARD will be truly circular



Misc.

- We can do cute stuff as needed



Locations

Brisbane

Unit 5, 65 Balham Road
Archerfield QLD 4108
Australia

P: +61 7 3717 4700

Newcastle

122 Woodstock Street
Mayfield North NSW 2304
Australia

P: +61 2 4940 8922

Sydney

1/1 Oakdale Close Horsley
Park NSW 2175
Australia

P: +61 2 9911 8111

Melbourne

303 Frankston-Dandenong Road
Dandenong South VIC 3175
Australia

P: +61 2 4940 8922

Adelaide

750 Port Road Beverley
SA 5009
Australia

P: +61 8 8444 9666

Perth

145 Balcatta Road
Balcatta WA 6021
Australia

P: +61 8 9240 6655

Townsville

6 Hubert Street,
South Townsville, QLD 4810
Australia

P: +61 7 2139 6555

Hobart

4/8 Sunmont Street, Derwent
Park, TAS 7009
Australia

P: +61 3 6288 6000